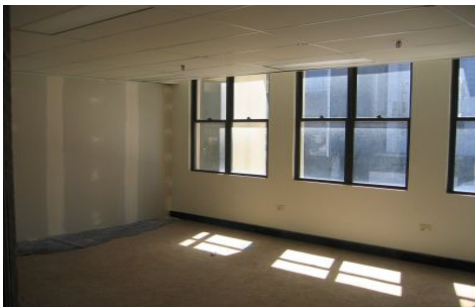


# GUNNING



## 301 Kent Street SYDNEY NSW

Classic commercial building, in western corridor of the CBD.

Close to Wynyard / Townhall Station & King Street wharf precinct.

Located next door to the new KENS office development which consists of approximately 74,000sqm of commercial space, entirely occupied by Westpac Bank corporation.

Western section of CBD, offering easy access in and out of the CBD.

Clear span floors.

Available Area: 30sqm, 60sqm, 80sqm, 100sqm, and whole floor 330sqm.

Natural light from front and side.

High ceilings.

Male and female amenities.

Kitchenette.

1 lift

**Building Size** : 30 sqm

**View** : <https://www.gunningre.com.au/lease/nsw/sydney-city/sydney/commercial/offices/5730124>



**Daniel Gunning**  
02 9698 0222