

# GUNNING



## 2/301 Kent Street Sydney NSW

Close to King Street wharf precincts & Wynard/Townhall Station.

Next door to new KENS Office development which consists of approximately 74,000sqm of commercial space entirely occupied by Westpac Bank.

Western section of CBD, offering easy access in and out of the CBD.

Clear span floors.

Lift.

High ceilings.

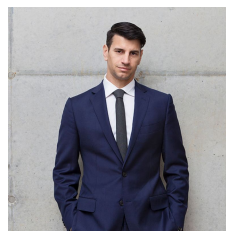
Male and Female amenities.

Kitchenette.

**Building Size** : 330 sqm

**View**

: <https://www.gunningre.com.au/lease/nsw/sydney-city/sydney/commercial/offices/5730122>



**Daniel Gunning**  
02 9698 0222