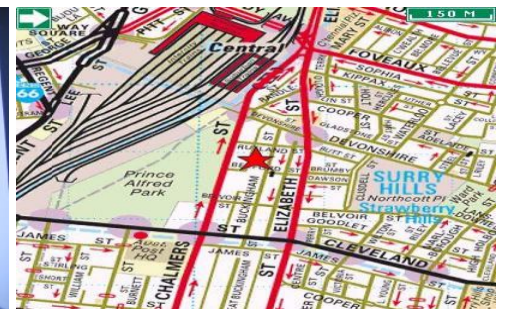


GUNNING



203/35 Buckingham Street Surry Hills NSW

Last 2 left out of 12, which were made available 3 weeks ago. Occupants in the other 10 suites include fashion designers, graphic designers, advertising and marketing companies.

In the heart of Surry Hills.

200m from Central Station.

Between Chalmer and Elizabeth Street.

Easy access to CBD.

A clean, white shell finish to all studios with large windows providing ample light.

Polished concrete floors.

1 lift.

Minimum ceiling height from 2.7m.

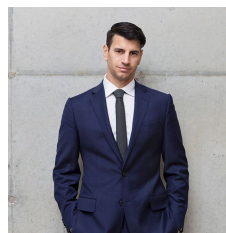
All studios fitted with wall mounted up lights, power points, phone / data outlets.

Fibre optic connected.

Proxy card security system.

Building Size : 86 sqm

View : <https://www.gunningre.com.au/lease/nsw/eastern-suburbs/surry-hills/commercial/offices/5730119>



Daniel Gunning
02 9698 0222

