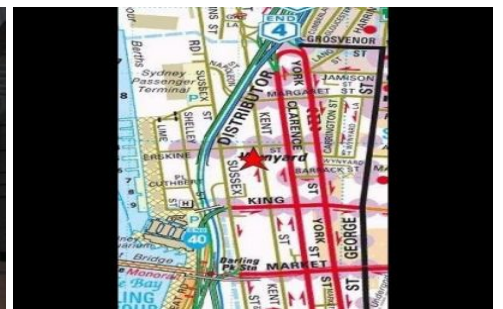


GUNNING



301 Kent Street Sydney NSW

Quality CBD showroom at a budget price.
Classic building, in western corridor. Close to King Street wharf presents Wynard/Townhall Station.

Next door to new KENS Office development which consists of approximately 74,000sqm of commercial space entirely occupied by Westpac Bank.

Western section of CBD, offering easy access in and out of the CBD.

Clear span floors.

Loading area.

Goods lift.

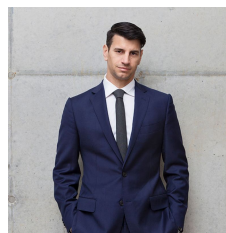
High ceilings.

Male and Female amenities.

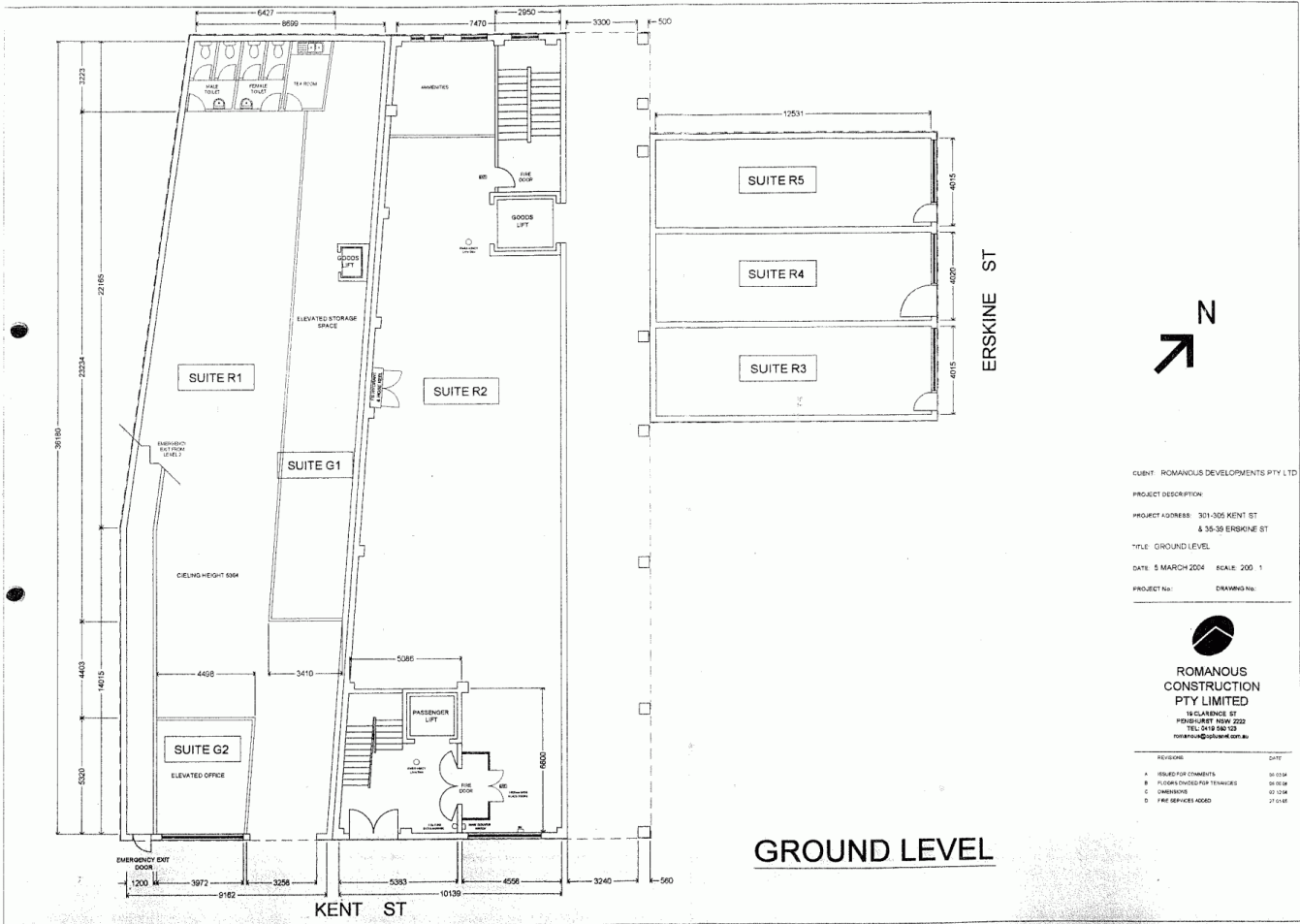
Kitchenette.

Building Size : 302 sqm

View : <https://www.gunningre.com.au/lease/nsw/sydney-city/sydney/commercial/retail/5730110>



Daniel Gunning
02 9698 0222



CLIENT: ROMANOUS DEVELOPMENTS PTY LTD
 PROJECT DESCRIPTION:
 PROJECT ADDRESS: 301-305 KENT ST
 & 35-39 ERSKINE ST
 TITLE: GROUND LEVEL
 DATE: 5 MARCH 2004 SCALE: 200 : 1
 PROJECT No: DRAWING No:



**ROMANOUS
 CONSTRUCTION
 PTY LIMITED**
 18 CALDERIDGE ST
 PENNINGTON NSW 2222
 TEL: 02 95 96 1625
 FORSALES@ROMANOUS.COM.AU

REVISION	DATE
A. ISSUED FOR COMMENTS	28/03/04
B. FLOORS CHECKED FOR TOLERANCES	28/03/04
C. CHECKED FOR	28/03/04
D. FIRE SERVICES CHECKED	27/03/04