

GUNNING



Suite 17.0/25 Bligh Street Sydney NSW

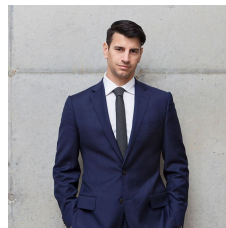
Bligh Chambers is located in the heart of the financial core. It is in close proximity to Martin Place, Wynyard and Circular Quay and is surrounded by restaurants, cafes, and all commercial institutions.

The building is very well presented. It is the perfect opportunity to be situated in prime location while enjoying quality services throughout the building, including an onsite gym and squash court.

The premises feature:

- Great natural light;
- Refurbished;
- New ceiling;
- T5 lighting
- Boardroom;

Building Size : 175.1 sqm
Land Size : 175.1 sqm
View : <https://www.gunningre.com.au/lease/nsw/sydney-city/sydney/commercial/offices/5730079>



Daniel Gunning
02 9698 0222