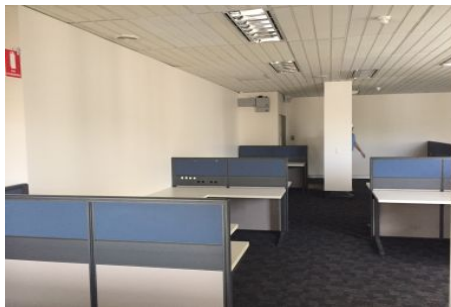


GUNNING



66 Wentworth Surry Hills NSW

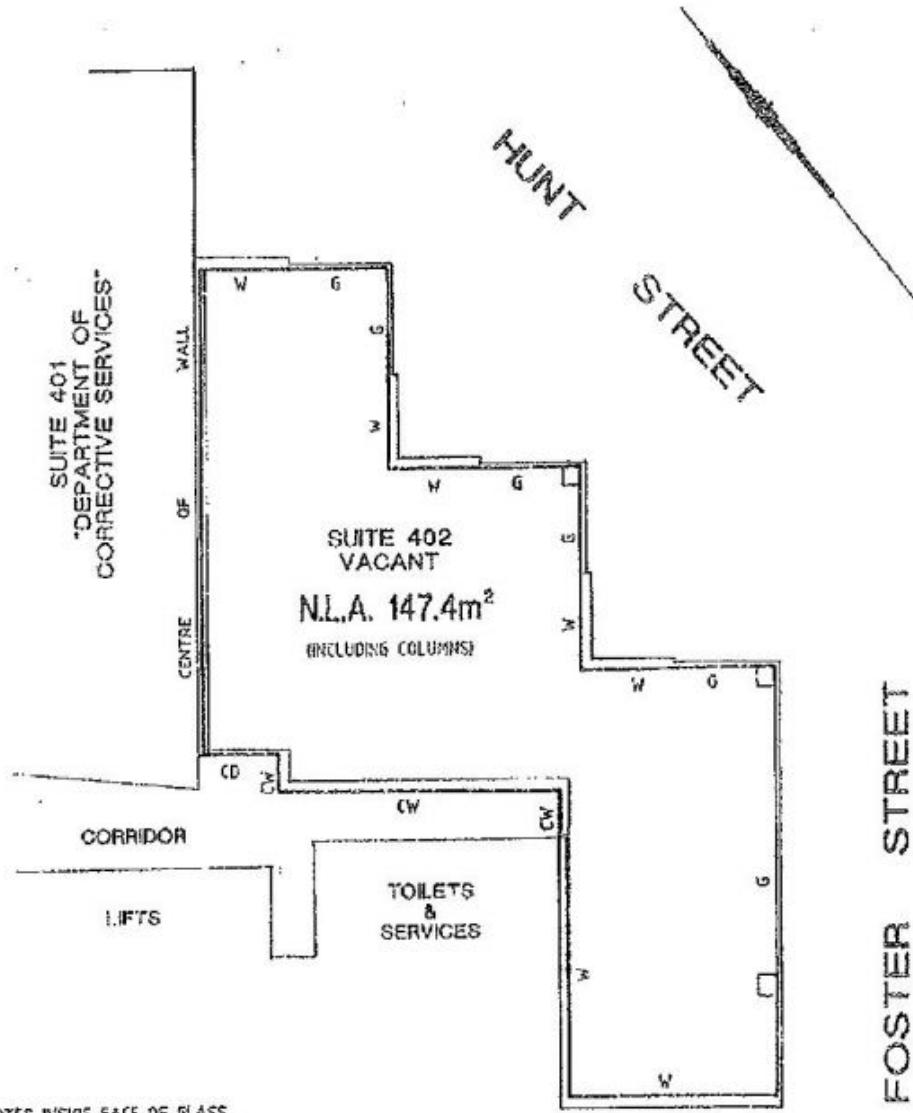
Gunning Commercial is pleased to offer a fully fitted out offering a great view over Hunt street, Foster street and Harmony park.

This property features;

- 147.4sqm
- Open space of circa 90 sqm
- 2 close offices of 8sqm
- 2 close offices or meeting rooms of 20sqm
- Including 5 work stations
- Attractive, efficient work environment with excellent natural light
- Good looking lobby and building located 5 mins away from the CBD
- Up to 4 car spaces available in the building for \$480 + Levy + GST per month

Building Size : 147 sqm
Land Size : 147 sqm
View : <https://www.gunningre.com.au/lease/nsw/eastern-suburbs/surry-hills/commercial/offices/5730064>

PLAN
 SHOWING NET LETTABLE AREA
 PART LEVEL 4
 No.66 WENTWORTH AVENUE, SURRY HILLS
 CITY OF SYDNEY



G - DENOTES INSIDE FACE OF GLASS.
 W - DENOTES INSIDE FACE OF WALL.
 CW - DENOTES CORRIDOR FACE OF WALL.
 CD - DENOTES CORRIDOR FACE OF DOOR.

AREA SHOWN HEREON REPRESENTS THE NET LETTABLE AREA MEASURED & CALCULATED IN ACCORDANCE WITH THE P.C.A. METHOD OF MEASUREMENT FOR LETTABLE AREAS (1997 REVISION)

P.W. Rygate & West
 SURVEYORS

P.W. RYGATE & WEST
 SURVEYORS
 LEVEL 3
 81 YORK STREET
 SYDNEY

REF. 69068 DATE 1/8/2002