

GUNNING



275 Goulburn Street Darlinghurst NSW

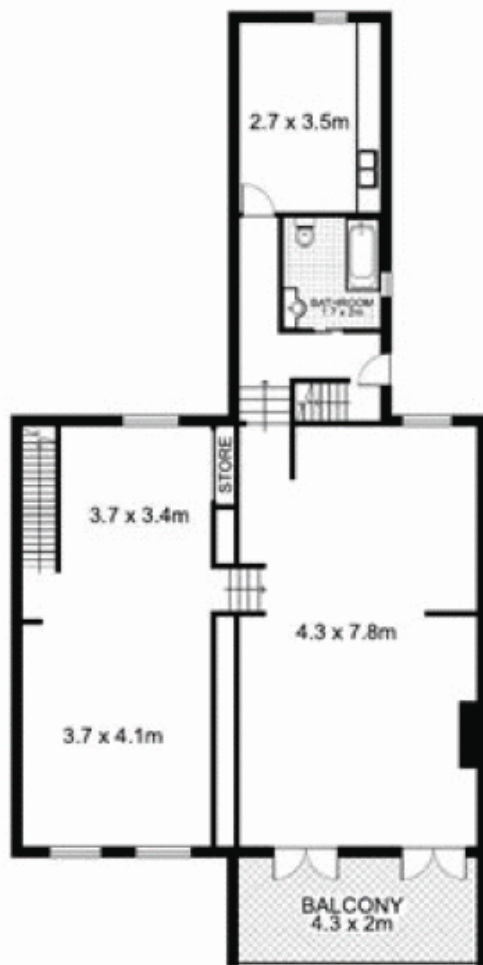
Located in Darlinghurst's premier Crown Street retail precinct, this location suits any retailer, lifestyle or commercial operator who wants exposure amongst some of Sydney's best independent brands and companies.

- Freehold retail terrace
- 100m² approx total area over 3 levels
- 4.5 metre frontage approx
- rear courtyard area
- Suits retail, commercial, hospitality (STCA) uses

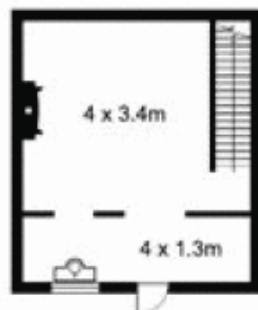
For a inspection please contact

Building Size : 100 sqm
Land Size : 100 sqm
View : <https://www.gunningre.com.au/lease/nsw/eastern-suburbs/darlinghurst/commercial/retail/5730054>

273-275 Goulburn Street, SURRY HILLS



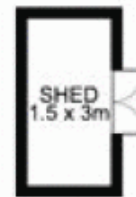
FIRST FLOOR



BASEMENT



ROOFTOP



GROUND FLOOR

Plans by
surroundpix
 .com.au
 1300 30 32 40

This floor plan is intended as a guide only. Layout dimension are approximate only. No representation or warranties of any nature whatsoever are given or intended. Any person using this information should rely on their own enquiries.